

USER GUIDE SWISSBATTERIES POWERTANK L



Thanks to this compact, light and nevertheless very powerful POWERTANK you will always have enough power with you, when no power socket is around far and wide, to recharge your Mobile Phone, iPod / MP3, GPS Navigation device, etc. anytime. The permanent uncertainty whether the operation time of your device is still sufficient has hereby come to an end.

1. Operation

The POWERTANK L is designed for easy operation. The intelligent electronics makes always sure that wrong handling is not possible. So the device is protected against overcharging, deep discharge and short-circuit, for example.

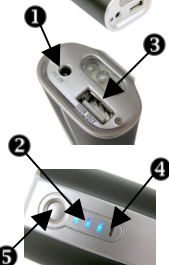


2. Charging

To recharge the POWERTANK the 3.5mm round plug of the included AC-Adapter, DC cigarette lighter cable, USB cable or eventually the Solar Charger SWISSOLARCARD (Optional) is connected to the corresponding input socket (marked DC-IN) **1**. The blue LED **2** indicate the charging of the POWERTANK.

The number of LEDs show the capacity of the battery (25/50/75/100%)

Please note: The included cable with USB is equally used for charging the POWERTANK from any USB Interface and as output cable with 3.5mm universal plug.



3. Power supplies

The included power supplies can be used worldwide. The adaptation to the various voltages mains frequencies is completely automatic.



4. Power Output Socket

The power output comes from the rectangular USB socket (USB-OUT) **3**. Here all worldwide common charger cables with USB plug (iPod, GPS Navigation devices, MP3, etc.) can be plugged in directly. For all other appliances the included USB cable with 3.5mm round plug is utilized.

Important: The red LED **4** indicate the power output.



5. Capacity Display

You can check stored capacity at any time by pressing the switch **5** (25/50/75/100%)

6. LED Flashlight

The integrated LED Flashlight is switched on and off by the switch **6**



7. Connection to a mobile appliance

The POWERTANK (and the power supplies / Solarcard) can be used with thousands of different models. For this purpose a multitude of power adapter tips are available (compatibility lists and source of supply under

www.swissbatteries.com .

Remark: The POWERTANK is capable of simultaneously charging itself and supplying power to mobile appliances.



8. Technical Specifications

Dimensions	: 2,9 x 4,2 x 9,4cm
Weight	: 130gr.
Input	: DC 5.0 - 6.0 Volt
Output	: DC 5.4 Volt / 700mA max.
Charging time	: 8 - 14h
Accu-Battery	: Lithium-Ion
	: 4400mAh / 3.7V
Power	: 16.3 Wh

Cycles	: 500 Charge / Discharge cycles
Light	: 3 x Power LED
	: 45'000mcd / 6Lm
Operation Temp.	: -18 to 45° C
Storage Temp.	: -18 to 55° C
Power supplies	: AC 100-240V / 5V / 600mA
	: DC 11-30V / 5V / 600mA
	: USB 5.0V / 500mA

